



MONROE COUNTY
CONSERVATION DISTRICT

Conservation Through Education



Monroe County Conservation District
8050 Running Valley Road
Stroudsburg, PA 18360

Admin/Technical 570-629-3060
Environmental Education 570-629-3061
Website: mconconservation.org

Spring 2016 Newsletter ~~~~~ Volume 40 No. 1

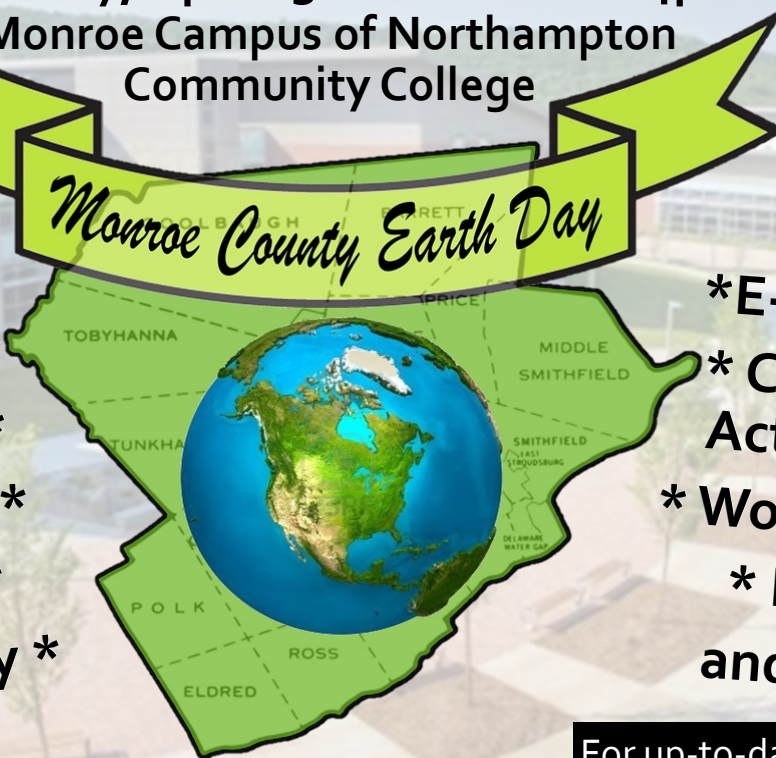
Join Us at the Monroe County Earth Day Celebration!

Saturday, April 23rd from 10am - 4pm

Monroe Campus of Northampton
Community College

Monroe County Earth Day

- * Live Music *
- * Exhibitors *
- * Give & Take *
- * Speakers *
- * Tire Amnesty *



- * E-cycling *
- * Children's Activities *
- * Workshops *
- * Food *
- and more!

For up-to-date information, visit www.mcearthday.org

Inside This Issue

Staff Directory	2
KCEF Update	2
News 'N Notes	3
Summer Programs & Camps	4
Monroe County Earth Day	5
BioBlitz 2016	6
Elk Viewing in the PA Wilds	6
42nd Conservation Camp	6
Century Day	6
Calendar	7-8
Water Ways Page	9
Dirt & Gravel Road Program	10
Manure Management Workshop ...	10
Membership Page	11
Costa Rica Birding Adventure 2017 ..	11
Quiet Valley Farm Walks	11
Spring Home School Programs	12
2016 Art Gallery Schedule	12



Musical performances by Christian Porter & Regina Sayles (above) and Nancy & Spencer Reed (right)



Keynote speaker Larry Schweiger, past President of the National Wildlife Federation (top right)





Monroe County Conservation District Board of Directors

- Joseph Hanyon, Esq., Chairperson
- Mark Sincavage, Vice-Chairperson
- Patrick Ross, Secretary
- Heidi Secord, Treasurer
- Paul Canevari
- David W. Moyer
- Charles A. Garris, Commissioner

Associate Directors

- Robert Armstrong, Carl B. Gould II, John K. Leiser, Ph D., John Lyman, P.E., Theresa Merli, Edith Stevens, Janet Weidensaul

District Staff

- Craig Todd, District Manager
- Lori Kerrigan, Head Resource Conservationist
- Drew K. Wagner, P.E., Michael J. Wilk, P.E., Hydraulic Engineers
- Matthew Giambra, John Motz, Resource Conservation Specialists
- Steven Baade, Resource Conservationist
- Roger Spotts, Environmental Education Coordinator
- Karen N. Boyle, Brittney Coleman, Brian Hardiman, Darryl Speicher, Environmental Educators
- Barbara Bistras, Administrative Coordinator
- Alesia Gallo, Debra Martin, Office Assistant Senior
- Robert Gubitosi, Groundskeeper
- The Board of Directors' monthly meeting is held at 8 am on the third Thursday of each month in the District office.

Kettle Creek Environmental Fund Update

Winter is once again in full swing with snow and cold, but the KCEF Board is eagerly looking forward to the 25th (yes, 25th!) Annual Dinner/Auction on Friday, May 20, at Camelback. Several special features will mark the 25th Anniversary of the Kettle Creek Environmental Fund and you won't want to miss them. From its rather modest beginning in 1992 under a tent at the Water Gap Country Club, the Annual Dinner/Auction has grown into the social event of the spring season. Requests for sponsors have been mailed, invitations are printed and being readied for mailing, and solicitation of auction items has begun. Mark your calendars and plan to attend this milestone event!

Due to last year's success, the Board is pleased to have again been able to fund the "Wish List" of projects submitted by the EE Center Staff. This year's list includes the Envirothons, Conservation Camp, Bug Fest, BioBlitz, cost-share for 1st grade programs in the Stroudsburg School District, 4th grade wetland units for all four Monroe County School Districts, and habitat units for Pocono Mountain and East Stroudsburg 3rd grades. Funding for the "Wish List" is possible due to the generosity of our sponsors, bidders, and all those who donate auction items.

The KCEF Board is currently seeking several new members, and interested individuals should submit


names and a brief bio for consideration.

It's hard to believe that we've been at this for 25 years, but since its inception, KCEF has raised nearly \$800,000 to support the programs and activities of the Kettle Creek Environmental Education Center. Thank you to all who have made this success possible and we look forward to seeing you on May 20 for the gala 25th anniversary event!

For more information, to purchase dinner tickets, or to donate auction items (deadline is Friday, May 6, 2016), please call the KCEF at (570) 629-3061 between 8am and 4:30pm, Monday through Friday. Visit our website at mconconservation.org to download auction/raffle forms. See you there! ♣

-John Woodling, KCEF President

**25th Annual Dinner/Auction
May 20, 2016
Camelback**



KCEF Board Members

- John Woodling, Pres.
- Alan Price Young, Vice-Pres.
- Thomas Felver, Treas.
- Jeffrey Wright, Sec.
- Joseph Bedrick
- Tim Brooks
- Patrick Calpin
- Charles Cilurso
- Trudi Quinn Denlinger
- Tim Fisher, II
- Kara Klaus-Major
- John Reilly
- John J. Riley

Monroe & Pike County's Master Gardeners Spring Workshop

"Enriching Your Life Through Gardening" will be presented by Penn State Master Gardeners, Monroe & Pike Counties, on Saturday, April 9, 2016, from 9am-2pm at the Club House, Country Club of the Poconos Municipal Golf Course, East Stroudsburg. Topics will include "The FUNdamentals of Gardening: Creating Gardens in Miniature," "Herbs and Everlastings from the Culinary to the Creative," "Rain Gardens and Why They Are Important," and "Developing a Community Garden 101."

Compost bins will be awarded to two lucky attendees! Call the Monroe County Penn State Extension Office at (570) 421-6430, Mon-Fri, 10am-4pm for registration instructions. ♣



News 'N Notes

Low Oil Prices are Affecting Recycling Efforts

As oil and gas prices continue to fall and consumers reap the rewards at the gas pump, recycling efforts and revenues to local governments are declining in a global market of surplus fossil fuels, according to a recent New York Times article "Skid in Oil Prices Pulls the Recycling Industry Down with It."

Recycling is a commodities business, just like oil, gold and, as the movie Trading Places taught us, frozen concentrated orange juice. New plastic is made from the by-products of oil and gas production. As this glut of oil and gas saturates the marketplace, the price to make new plastic is becoming cheaper than using recycled materials.

Plastic bottles a year ago were worth \$230 per bale. They now are worth \$112. Large recycling companies would pay local governments for their recycled goods during times of high oil prices. Washington D.C. earned \$500,000 from Waste Management in 2011 for their recycled materials. Last year the city paid the company \$1.37 million to accept their recyclables.

There is some positive news. Many state governments require recycling, and in the era of corporate branding and "being green," many companies, such as Pepsi and Proctor & Gamble, continue to purchase recyclables to meet sustainability goals. A recycling program in Louisiana was recently in jeopardy of being discontinued until energetic seventh graders initiated a public outcry to save the program.

Michael Taylor, Vice President for International trade at the Society of Plastic Industry, says there are other factors affecting the recycling industry. "The thinking is that the demand will grow because of the greening of the mainstream American consumer." ♣

EPA's "New" Clean Water Act Ruling and How it Affects Pennsylvania

The EPA's rule does only one thing: It restores protection to thousands of miles of headwater streams and over 20 million acres of the Nation's wetlands that was in place for 31 years before the regulations were changed in 2003.

Prior to the Clean Water Act passage in 1972, pollution discharges were either largely unregulated, or regulated to the point that pollution discharged into a large river or lake. Back then, Time Magazine proclaimed Ohio's Cuyahoga River, the one that caught on fire, to be among the most polluted in the country. Their editorial lamented "Some river! Chocolate-brown, oily, bubbling with subsurface gases, it oozes rather than flows. 'Anyone who falls into the Cuyahoga does not drown,' Cleveland's citizens joke grimly. 'He decays.'"

But the Cuyahoga River was only the poster child for polluted water. Most of the Nation's rivers were so fouled they were not safe for fish or humans. Fueled by public outrage, 96 republicans joined 151 democrats to override President Nixon's veto to pass the Clean Water Act (CWA). The CWA protected the Nation's wetlands and streams all the way to the headwaters because we all knew that most pollution did not come

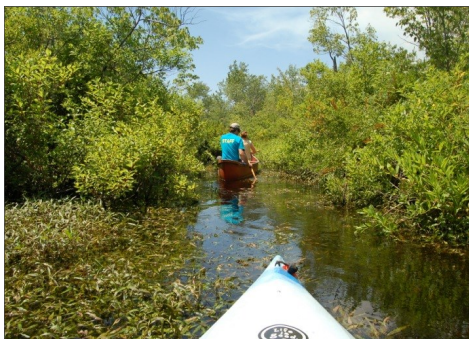
from the end of a discharge pipe; it came from the upper headwaters.

So for the next 31 years, the Nation began the long process of restoring the chemical, physical, and biological integrity of our lakes and rivers. The CWA regulations prove that protecting water quality and economic prosperity can go hand in hand. Since its passage in 1972, our Gross Domestic Product has doubled. Clearly, we have all benefited from having clean water.

Despite the CWA's clear societal and economic benefits, the Bush administration changed the regulations in 2003, which eliminated federal protection for headwater streams and so-called isolated wetlands. The EPA estimated that the rule change eliminated protection for over 46,000 miles of Pennsylvania's headwater streams and over half of its vegetated wetlands. These small headwater streams are where over 30% of Pennsylvanians get their drinking water and are the foundation of our fine trout streams, providing huge economic benefits for industry, recreation and wildlife.

Claims that pulling weeds and building fences could be a regulated activity under the CWA is just nonsense, as is the claim that EPA's rule is a significant expansion of federal jurisdiction. The rule simply restores federal protection that was in place for 31 years until the Bush administration changed the regulations. In fact, the new rule protects fewer wetlands than the original CWA.

Despite the fact that there has been no federal protection for headwater streams and so-called isolated wetlands since 2003, there has been no change in protection in Pennsylvania because the Department of



Cranberry Creek as it flows through the Tannersville Cranberry Bog

Continued on page 9

We wish to thank the Monroe County 4-H Picture Perfect: Photography Club for donating their artwork sales of \$160 to Kettle Creek to continue our goals of supporting artists and our community. Thank you!!

Summer Programs

Kettle Creek for Kids Ages 4 - 6

From June 21 - August 9, this program for young children ages 4-6 will be held Tuesdays from 10 - 11am. Children will learn about various environmental topics each week. Cost: \$5/non-member, \$3/EE Center member. (Parents must attend with their child.)

Camps at Kettle Creek

Our Summer camps at the EE Center offer a unique opportunity for kids to learn more about their natural world. In this time when children are spending less time outside, these camps provide a multitude of learning opportunities under the guidance of trained professionals with years of experience. Hands-on activities combined with the resources of the EE Center provide a safe environment for children interested in learning more about the Poconos.

All camps run Monday – Friday. Late pick-up is available from 3:30–5:30pm for \$50 per week or \$10/day. Early bird discount of \$10 if paid by Friday, May 6!

Nature Discovery Ages 7 - 8

June 20-24, 9am–12:30pm, \$90/non-member, \$75/EE Member. Explore the wonders that Kettle Creek Wildlife Sanctuary has to offer.

Kettle Creek Adventurers Ages 12 - 14

June 20-24, 8am–3:30pm, \$235/non-member, \$210/EE Member. Learn outdoor skills, explore new terrain, and team up for a whitewater rafting adventure! Camp concludes with a two-day backpacking and camping trip in the Delaware State Forest.

Citizen Scientists Ages 11 - 14

June 27-July 1, 8am–3:30pm, \$175/non-member, \$150/EE Member. Campers will engage in citizen science projects while in the field learn-

ing about the ways scientists study nature and analyze data. Topics will focus on forest, field, and pond ecology, birds, reptiles, amphibians, insects, watershed monitoring and weather.

Beautiful Beasts Ages 9 - 12

July 11-15, 8am–3:30pm, \$175/non-member, \$150/EE Member. Come to Kettle Creek to learn awesome facts about Pocono animals. How do they survive? There will be lots of cool critter discoveries.

Water We Know Ages 9 - 12

July 25-29, 8am–3:30pm, \$175/non-member, \$150/EE Center member. This camp is all about water. Have fun and learn about water habitats, who lives in them, and how. You might even find yourself spending time in water too!

Ever-Changing Ecosystems Ages 9 - 12

August 1-5, 8am–3:30pm, \$175/non-member, \$150/EE Member. What do plants and animals consider home? Join us on some adventures to find out.

Wild Wonders Ages 7 - 8

August 8-12, 9am–12:30pm, \$90/non-member, \$75/EE Member. This camp is all about discovering the wonders of nature!

Winging It Ages 10 - 14

August 8-12, 8am–3:30pm, \$200/non-member, \$175/EE Center member. Come to camp to explore some really cool places right in our backyard. Every day will take campers on a new adventure to a different place.

Creepy Crawly Critters Ages 9-12

August 15-19, 8am–3:30pm, \$175/non-member, \$150/EE Member. Some of the coolest critters we know are super small. Join us and learn about all kinds of creepy crawly critters during this camp.

Public Bog Walks (Families)

Wednesdays, June 15 - September 7 from 10am–12:30pm. We'll be leading walks through a very unique National Natural Landmark - the Tannersville Bog. Summer is an excellent time to explore the Bog and learn about this unique wetland. Cost: \$6/non-members, \$4/EE Center or Nature Conservancy members and children under 12. Meet at the bog parking lot on Cherry Lane Road. **Pre-registration is required.**

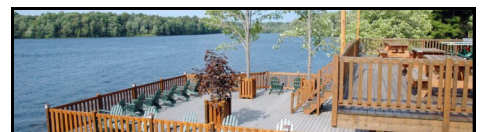
Tenth Annual Monroe County Bug Fest (Families)

A festival celebrating insects from 10am–3pm on Saturday, July 9. Displays, activities, games, live insects, nature walk, and puppet shows all day, all about insects! Cost: \$5/child ages 4 - 12.

Butterfly Count (Families)

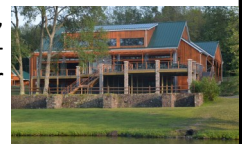
Help count butterflies at Kettle Creek and the Tannersville Bog on Saturday, July 23 from 9:30am - 12:30pm. You'll become part of an ever-growing group of people who call themselves *citizen scientists*. This event is for anyone interested in counting numbers and species of butterflies in our area for the North American Butterfly Association (NABA). Cost: \$5 of which \$3 goes to NABA to fund the nationwide count. ♡

For more information,
please call our office or
visit our website at
mcconservation.org



Annual Members and Friends Dinner 2016

Don't forget! Friday, April 8 is our Annual Members and Friends of Conservation Dinner at Trout Lake Retreat and Conference Center, near Bartonsville. Please call our office for more details, or visit our website for the dinner reservation form.



Monroe County Earth Day 2016

Monroe County Earth Day Schedule of Events

Main Stage Entertainment

- 10:00 am - Matt Connel, Dean NCC-Monroe
- 10:15 am - Katie Rubino
- 10:50 am - Mike Pilgermayer
- 11:35 am - Dave LaPoint, Sarah Street Grill
- 11:45 am - Nancy & Spencer Reed, music
- 12:55 pm - Larry Schweiger, Penn Future & NWF (retired), Keynote Address
- 1:30 pm - Porter & Sayles
- 2:50 pm - Craig Todd, MCCD
- 3:00 pm - T.B.A. (NCC Band)

Keystone Hall Workshops

- 10:15 am - Garrett Beers, DCNR "Forest Legacy: Events that Shaped Our Forests"
- 10:45 am - Kathy Uhler, PWREC "Human & Wildlife Interactions"
- 11:30 am - John Woodling, MCPC (retired) "Changes in Monroe County"
- 2:30 pm - Geoffrey Mehl, Pennystone Project "Sustainable Landscaping with Native Plants"

Give and Take

10 am – 1 pm GIVE, 1 pm – 4 pm TAKE

Sustainability Tours

10:30 am; 11:30 am; 12:30 pm & 3 pm

Tire Amnesty

10:00 am – 2:00 pm

E-cycling

10:00 am – 2:00 pm



Larry Schweiger, Keynote Speaker



Katie Rubino



Geoffrey Mehl, Workshop Host



Mike Pilgermayer



Monroe Campus of NCC - First entire college campus to be Silver LEED Certified from the U.S. Green Building Council

Children's Activities & Musical Entertainment All Day!

Headliners:



Nancy & Spencer Reed



Porter & Sayles



Kathy Uhler, Founder and Director of the Pocono Wildlife Rehabilitation & Education Center



8th Annual Give & Take

Hosted by Close the LOOP



Tire Amnesty for Monroe County residents!



Scan this QR Code to visit the Monroe County Earth Day website!

www.mcearthday.org

2nd Annual MCCD Photo Contest

Send in photos that showcase Monroe County's finest Natural Resources! Earn a spot in both our art gallery and a 2017 MCCD calendar! Submissions due September 30th. For details and entry form, please see the link on our MCCD website.



BioBlitz 2016 at the West End Regional Park

The Monroe County Conservation District is partnering with the West End Park and Open Space Commission in sponsoring our sixth BioBlitz, funded by the Kettle Creek Environmental Fund, on June 17-18, 2016 at the West End Regional Park, Chestnuthill Township. A BioBlitz is designed to be part-contest, part-festival, part-educational event and part-scientific endeavor that will bring together scientists from Monroe County, Academia, the Monroe County Conservation District, and the public in a race against time to count the species of plants and animals living on the park's 244 acres.

The BioBlitz will begin at 3pm Friday, June 17 and ends 24 hours later, Saturday, June 18, at 3pm. Teams of scientists and helpers will be sampling the fauna and flora of the entire property in a methodical count of what lives there. There will be ample opportunity for the public of all ages to get involved by accompanying the teams in the field or by observing and helping to count and sort a variety of species at the BioBlitz headquarters. You can help for a few hours or just stop by to learn about the process. Kids of all ages will be excited to observe and learn about how scientists do their jobs in the lab and the field.

The planning has begun and we are looking for people interested in helping with the survey, as well as encouraging the public to visit us Saturday during the BioBlitz. The West End Regional Park was established in 2002 through the cooperation of Chestnuthill, Ross, Eldred, and Polk Townships and the Monroe County Open Space Program. The park is located on Merwine-Hilltop Road. The BioBlitz is generously supported by the Kettle Creek Environmental Fund. For more information, an updated schedule, or to sign up as part of a survey team, please call the EE Center at (570) 629-3061. ♣

Elk Viewing in the Pennsylvania Wilds

The EE Center will be leading another "Elk Viewing in the Pennsylvania Wilds" bus trip September 26-29, 2016. Our first trip last fall was a big success and even though it rained we saw almost 100 elk including 12 big bulls and heard many bugling! We received many positive comments on the trip and lots of suggestions for improvements. This year's trip will not only feature Elk viewing opportunities, but also stops at several state parks, the PA Lumber Museum, and include an extra night in the beautiful town of Wellsboro. A complete schedule and cost is on our website, or you can call us and we will send you the information. Space is limited to 13 people. ♣

Century Day: 100 Birds or Bust

Join Roger Spotts and Darryl Speicher on May 21 for Century Day, an all-day adventure where we'll try to find 100 species of birds without leaving Monroe County. This year we'll meet at Kettle Creek at 7am then head to the Pocono Plateau to start our day. We'll make our way south and east visiting some incredible habitats along the way. Cost: \$50/EE Center members, \$65/non-members. In addition to the opportunity to spend all day with Roger and Darryl, the fee includes lunch, beverages, and snacks throughout the day. Pre-registration is required and the deadline is Friday, May 13. There is limited space so register early!



42nd Annual Monroe County Conservation Camp



Applications are now being accepted for the Monroe County Conservation Camp scheduled for July 16-23 at ESU's Stony Acres Facility. This week-long residential camp involves students ages 14 through this year's graduate in a variety of hand-on experiences dealing with conservation and the outdoors in general. The week includes programs such as archery, bird banding, Pocono wildlife, fly-fishing, plus many more. The camp's highlight is a 2-day canoe trip on the Delaware River. Cost for the entire week is \$200 and scholarships are available each year. For more information or to receive an application, please contact Roger Spotts at (570) 629-3061, or rsmccd@ptd.net. ♣

New Wildlife Viewing Blind at KC



Gabriel Schaefer, Boy Scout Troop 101 of Gilbert, PA, has constructed a beautiful wildlife viewing blind on the shore of Swink's Pond at the Kettle Creek Wildlife Sanctuary. He organized 17 volunteers who put in 194 hours of work to make it a reality. Completing this project helps Gabriel fulfill his requirements to become an Eagle Scout, the highest rank one can achieve as a Boy Scout of America. ♣

KETTLE CREEK ENVIRONMENTAL EDUCATION CENTER PUBLIC PROGRAMS

MARCH

Building closed - 12th - Saturday

SOLD OUT - Mystery Birding Field Trip - 18th - Friday

Fly Fishing Workshop - 19th - Saturday - Join several members of the Brodhead chapter of Trout Unlimited from 9am - 12 noon for an introductory program on fly fishing. Equipment, casting, strategy, fly-tying, basic trout stream macro-invertebrate entomology, and local fishing areas will be covered and demonstrated. A film, slide program, and raffles are included with admission. Cost: \$8/non-members, \$5/EE Center members and children under 12. **Please call the EE Center to register. Pre-registration is required by Friday, March 18, 2016.**

SOLD OUT - Behind the Scenes at the American Museum of Natural History - 23rd - Wednesday

Building closed - 25th - Friday - Holiday

Building closed - 26th - Saturday

Stalking the Wild Woodcock - 30th - Wednesday - Timberdoodle, Bogsucker, and Big Eye are some of the strange nicknames given to the equally strange American Woodcock. Join Environmental Educator Brian Hardiman for this 1 ½ hour program where you will learn about the life history and amazing courtship displays of this fascinating and entertaining little bird. Meet at the EE Center at 6:30pm for a brief presentation before traveling to the Tannersville Bog area to observe the woodcock's lovesick antics. Cost: \$5/non-members, \$3/children under 12. **EE Center members FREE.**

APRIL

Amazing Amphibians - 2nd - Saturday - Join John Burns, Ph.D. of the American Museum of Natural History at 10am for a morning of amazing amphibian adaptations. John is a Stroudsburg native and has been working on gaining a greater understanding of the incredible relationship between spotted salamanders and symbiotic green algae. Cost: \$5/non-members, \$3/children under 12. **EE Center members FREE.**

Art Opening: Linda Stockman - "Wildlife Art" - 2nd - Saturday - Please see last page for details.

Opening Reception: 11am - 1pm.

Signs of Spring on the Farm - 2nd - Saturday - Please see page 11 for details.

Home School Program "The Three R's" - 7th - Thursday - Please see last page for details.

Annual Members and Friends Dinner at Trout Lake - 8th - Friday - Please mark your calendars for our Annual Members and Friends of Conservation Dinner to be held at Trout Lake Retreat. Invitations will be mailed to all members, or you can call us at 570-629-3061 to receive more information. Visit our website for a dinner reservation form. Deadline for registration is Monday, March 28.

Early Spring Bird Walk - 9th - Saturday - Bird migration is just getting underway at this time... Join Environmental Educator Brian Hardiman at 9:30am for this two-hour stroll along the Kettle Creek trails searching for early spring arrivals as well as lingering wintering species. Cost: \$5/non-members, \$3/children under 12. **EE Center members FREE.**

Building Open - 16th - Saturday 9am-1pm

Monroe County Earth Day - 23rd - Saturday - Join us as we celebrate Monroe County's environmental efforts and successes! Please see front cover and page 5 for details.

Monroe County Conservation District Rain Barrel Sale - 23rd - Saturday - This will be held in connection with Monroe County Earth Day at NCC Monroe Campus. Please see page 9 for information.

Building closed - 23rd - Saturday

Signs of Spring - 30th - Saturday - Spring is a season of hope and renewal. Join us at 10am as we meander the trails at Kettle Creek looking for the many signs of spring. Cost: \$5/non-members, \$3/children under 12. **EE Center members FREE.**

MAY

Birding the Bog at 7am - 3rd - Tuesday - Combine one of the most unique natural settings with one of the most spectacular natural phenomena and you get a morning of migration birding at the Bog. Cost: \$6/non-members, \$4/EE Center or Nature Conservancy members and children under 12. **Pre-registration is required. Directions:** Route 611, at the light at the Tannersville Inn turn onto Cherry Lane Road. The bog parking lot is 1.9 miles from 611 on the right.

Public Bog Walk - 4th - Wednesday - Join an Environmental Educator at 1pm at the Bog parking lot and take a 2 ½ hour guided journey into the unique Tannersville Cranberry Bog. Along the way, our Environmental Educators will explain the Bog's formation, its interesting plant and animal life, and the role the local Preserve Committee and the Nature Conservancy play in its continued protection. Please wear appropriate footwear. Cost: \$6/non-members, \$4/EE and Nature Conservancy members and children under 12. **Pre-registration is required and limited. Directions:** Route 611, at the light at the Tannersville Inn turn onto Cherry Lane Rd. The bog parking lot is 1.9 miles from 611 on the right.

Home School Program "Wild about Wildflowers" - 5th - Thursday - Please see last page for details.

Salamander Search - 7th - Saturday - The forests at Kettle Creek are home to several species of salamanders and other amphibians. Join us as we explore the trails in search of these slimy creatures. The program begins at 10am and is open to salamander searchers of all ages. Cost: \$5/non-members, \$3/children under 12. **EE Center members FREE.**

Birding the Bog at 7am - 10th - Tuesday - Full description please see May 3rd. Pre-registration required.

Public Bog Walk - 11th - Wednesday - Signs of spring will be everywhere as we venture into this unique wetland habitat. This guided walk begins at 1pm. Full description please see listing for May 4th. **Pre-registration required.**

Ponder A Pond - 14th - Saturday - Join us as we explore Swink Pond at Kettle Creek and discover the fascinating aquatic critters living in it. We will catch and identify the unusual creatures that call this place home, so please wear shoes that can get muddy (no open-toed footwear, please). This hands-on, family-oriented program starts at 10am; buckets and nets will be provided. Cost: \$5/non-members, \$3/children under 12. **EE Center members FREE.**

Public Bog Walk - 14th - Saturday - Join an Environmental Educator at 2pm at the Bog parking lot and take a 2 ½ hour journey into the Bog environment. Please wear appropriate footwear. For more information, please see listing for May 4th. **Pre-registration required and limited.**

Continued on next page

*Pre-registration is suggested for all programs offered. For more information, or to register, please call the Center at 570-629-3061, Monday - Friday 8 am to 4:30 pm, and most Saturdays from 9 am to 1 pm or visit our website www.mcconservation.org.

KETTLE CREEK ENVIRONMENTAL EDUCATION CENTER PUBLIC PROGRAMS

MAY Cont'd

Birding the Bog at 7am - 17th - Tuesday - Full description please see May 3rd. Pre-registration required.

Public Bog Walk - 18th - Wednesday - This guided walk begins at 1pm. Full description please see listing for May 4th. **Pre-registration required.**

KCEF Dinner/Auction - 20th - Friday - Please see page 2 for more information about the 25th anniversary of this event.

Century Day - 21st - Saturday - Please see page 6 for more information. **Pre-registration deadline is Wednesday, May 18th. Pre-registration and payment are required and limited. Refunds given only if notification is made at least three days prior to program date.**

Amphibian and Reptile Ramble - 21st - Saturday - Come out to the EE Center from 10am-noon and help Environmental Educator Brian Hardiman in his continuing effort to find and document the frogs, salamanders, snakes, and turtles that call Kettle Creek home. Our findings will be submitted to the Pennsylvania Amphibian and Reptile Survey (PARS), a state-wide project documenting the status and distribution of these animals. Cost: \$5/non-members, \$3/children under 12. **EE Center members FREE.**

Art Opening: Nancy Hopping - "Living with Wildlife" - 21st - Saturday - Please see last page for details.
Opening Reception: 11am - 1pm.

Public Bog Walk - 22nd - Sunday - Join an Environmental Educator at 1pm at the Bog parking lot and take a 2 ½ hour journey into the Bog environment. Please wear appropriate footwear. For more information, please see listing for May 4th. **Pre-registration required and limited.**

Full Moon Hike at Tannersville Bog - 23rd - Monday - Explore the bog under the light of a full moon. The walk begins at 7pm and participants should bring a flashlight. Please wear appropriate footwear. Cost: \$6/non-members, \$4/EE and Nature Conservancy members and children under 12. **Pre-registration required and limited. Directions:** Route 611, at the light at the Tannersville Inn turn onto Cherry Lane Rd. The bog parking lot is 1.9 miles from 611 on the right.

Public Bog Walk - 25th - Wednesday - This guided walk begins at 1pm. Full description please see listing for May 4th. **Pre-registration required.**

Building closed - 28th - Saturday

Building closed - 30th - Monday - Holiday

JUNE

Public Bog Walk - 1st - Wednesday - June is the month for the widest variety of flowers blooming in the bog. This guided walk begins at 1pm. Full description please see listing for May 4th. **Pre-registration required.**

Home School Program "Astronomy" - 2nd - Thursday - Please see last page for details. **Grades K—2 program only.**

Family Scavenger Hunt - 4th - Saturday - The EE Center will sponsor a Family Scavenger Hunt program beginning at 10am. Participants will be given a list of natural objects to find. Prizes will be awarded to all participants during this two-hour program. Cost: \$5/non-members, \$3/children under 12. **EE Center members FREE.**

Art Opening: Pocono Photo Club - "Natural Monroe" - 4th - Saturday - Please see last page for details.
Opening Reception: 11am - 1pm.

Public Bog Walk - 8th - Wednesday - This guided walk begins at 1pm. Full description please see listing for May 4th. **Pre-registration required.**

Canoe/Kayak Trip at the Bog - 9th - Thursday - Join us on a paddling trip into the Bog Preserve on Cranberry Creek. The program lasts 3 hours. Participants are required to provide their own kayak or canoe. Meet at the Bog parking lot at 10am. Cost: \$6/non-members, \$4/EE Center or Nature Conservancy members and children under 12. **Pre-registration is required and limited. Directions:** Route 611, at the light at the Tannersville Inn turn onto Cherry Lane Rd. The bog parking lot is 1.9 miles from 611 on the right.

MAPS at Kettle Creek - 11th - Saturday - For the past 17 years Kettle Creek has been part of MAPS (Monitoring Avian Productivity and Survivorship), a continent-wide effort to gain greater insight into the lives of our breeding birds. MAPS starts at dawn but the program will begin at 9am. Cost: \$5/non-members, \$3/children under 12. **EE Center members FREE.**

Public Bog Walk - 11th - Saturday - Join an Environmental Educator at 2pm at the Bog parking lot and take a 2 ½ hour journey into the Bog environment. Please wear appropriate footwear. For more information, please see listing for May 4th. **Pre-registration required and limited.**

Building closed - 14th - Tuesday - Holiday

Public Bog Walk - 15th - Wednesday - This guided walk begins at 10am. Full description please see listing for May 4th. **Pre-registration required.**

Breeding Birds at the Farm - 16th - Thursday - Please see page 11 for more information.

2016 BioBlitz at the West End Regional Park - 17th-18th - Friday-Saturday - A BioBlitz is designed to be part-contest, part-festival, part-educational event and part-scientific endeavor that will bring together scientists from Monroe County, Academia, MCCC, and the public in a race against time to count the species of plants and animals living on the park's 244 acres. Please see page 6 for more details about this exciting event!

Building closed - 18th - Saturday

Public Bog Walk - 22nd - Wednesday - This guided walk begins at 10am. Full description please see listing for May 4th. **Pre-registration required.**

Home School Program "Astronomy" - 23rd - Thursday - Please see last page for details. **Grades 3-12 program only.**

Building Open - 25th - Saturday 9am-1pm

Public Bog Walk - 26th - Sunday - Join an Environmental Educator at 1pm at the Bog parking lot and take a 2 ½ hour journey into the Bog environment. Please wear appropriate footwear. For more information, please see listing for May 4th. **Pre-registration required and limited.**

Public Bog Walk - 29th - Wednesday - This guided walk begins at 10am. Full description please see listing for May 4th. **Pre-registration required.**

JULY

Building closed - 2nd - Saturday

Building closed - 4th - Monday - Holiday



Please stay tuned while our website is being updated with great new features!

*Pre-registration is suggested for all programs offered. For more information, or to register, please call the Center at 570-629-3061, Monday - Friday 8 am to 4:30 pm, and most Saturdays from 9 am to 1 pm or visit our website www.mcconservation.org.

Water Ways

EPA's "New" Clean Water Act Ruling and How it Affects Pennsylvania

Continued from page 3

Environmental Protection's regulations are not only more encompassing than the federal program, they have the exact same definition as to what constitutes a wetland – and it does not include mud puddles. It is for this reason that the Corps of Engineers and EPA have delegated almost all the permitting authority to the PA Department of Environmental Protection (DEP) and have been working with the DEP for the past 35 years to protect the Commonwealth's water resources.

In other words, EPA's new rule changes absolutely nothing in Pennsylvania because the state's program has mirrored the federal program for 35 years.

The big change will be in states that don't have a strong water quality protection program like Pennsylvania does. In those states, EPA's rule will once again protect the millions of acres of wetlands and thousands of miles of headwater streams that have been filled and dredged since the 2003 rule change.

Our country is incredibly fortunate that back in 1972 our elected representatives recognized that our economy, our very way of life, is inextricably tied to clean water. The same Cuyahoga River that once caught on fire now supports an annual run of salmon. ♠

-Written by Ed Perry, National Wildlife Federation



Our clean, beautiful, and life-giving waterways deserve to be protected.

The Delaware River

Photo credit: The Nature Conservancy

MCCD 2016 Rain Barrel Sale Order Form

****Take note! Our date and location for the Rain Barrel Sale Pick-up has changed! Pick up your rain barrels from 11am - 3pm at Monroe County Earth Day, held at Monroe Campus of NCC on Saturday, April 23!***

PICK-UP DATE: Saturday, April 23, 2016 TIME: 11am - 3pm at NCC Monroe ORDER DEADLINE: Wednesday, April 13, 2016

Rain Barrel Features:

- ♣ 58-Gallon, Repurposed, Food-Grade Plastic Barrel
- ♣ Terra Cotta Colored, once held olives
- ♣ 42 inches tall x 24 inches wide
- ♣ Bulk Head Style Fittings
- ♣ 2 Piece Screened Lid
- ♣ 2 Screened Overflows
- ♣ Neoprene Gaskets
- ♣ Brass Ball Valve Spigot (90° turn)
- ♣ Brass Bottom Drain
- ♣ No Adhesives used in Construction
- ♣ Fixtures are all garden-hose thread
- ♣ Non-Corroding Materials
- ♣ Does not need to be hard fit
- ♣ May connect two barrels together via the bottom drain using a garden hose
- ♣ May swap the spigot with the bottom drain and elevate the barrel to maximize the available water
- ♣ Not included: downspout elbow or garden hose



\$80

Mail Order and Check To:
 Monroe County Conservation District (MCCD)
 8050 Running Valley Road
 Stroudsburg, PA 18360
Checks made payable to: MCCD

Rain Barrel Cost: \$80.00/ea.

X number of barrels: _____

= Sub Total: _____

6% Sales Tax: _____

Total: _____

NAME _____

PHONE NUMBER _____

ADDRESS _____

CITY _____ **STATE** _____ **ZIP** _____

EMAIL _____

Spring '16 Dirt and Gravel Road Maintenance Workshop & Equipment Demonstration

On Tuesday, May 3, from 9am - 1pm, Monroe County Conservation District in cooperation with Middle Smithfield Township's Public Works Department will host a workshop demonstrating road maintenance techniques using a power rake box and a power blower. Middle Smithfield Township currently uses this equipment for road and shoulder grading on dirt and gravel roads. The workshop will cover the basics of road surface maintenance goals and methods for attaining durable surfaces and drainage. Reducing maintenance intervals and surface material erosion saves money and time, and it's good for the environment! The workshop is FREE and open to road supervisors, maintainers, and operators. Meet at the McDade Trail parking area on Freeman Tract Road in the Delaware Water Gap National Recreation Area. Lunch will be provided. For more information and to register, call John Motz at MCCD at 570-629-3060. Registration is on a first-come basis. ♣



A power blower, used by Middle Smithfield Township's Public Works Department for Dirt and Gravel Road Maintenance

Call for DGLVR Applications

The Monroe County Conservation District Quality Assurance Board (QAB) is currently accepting applications for project funding under the Dirt, Gravel and Low Volume Road (DGLVR) Maintenance Program. Grant applications for projects must be submitted by April 30, 2016, after which the QAB will meet to rank applications and begin allocating available funds. All municipally-owned dirt and gravel and low volume roads (500 vehicles per day or less) open to the public are eligible for this road maintenance program. Note: These funds cannot be used for private or community association road projects. Applicants should contact John Motz at MCCD to arrange a pre-application site visit. ♣

Upcoming Environmentally Sensitive Maintenance (ESM) Training

Penn State University's Center for Dirt and Gravel Road Studies is offering a number of Environmentally Sensitive Road Maintenance Courses in 2016. This intensive two-day classroom session focuses on providing knowledge and tools necessary for road owners to maintain roads in a more cost-efficient and environmentally sensitive manner. The course runs from 8am to 4pm for two days and includes lunch. The course is free to municipal, county, and state agency personnel involved with PA's Dirt and Gravel Road Program. All out-of-state and private companies must pay a fee of \$395. This course provides 1.3 Continuing Education Units from the PSU College of Engineering. Everyone will need to register **online**. Find the link on CDGRS website at www.dirtandgravel.psu.edu. The nearest scheduled training for Monroe County will be held on:

June 21 & 22, 2016 (Tuesday/Wednesday)
Monroe County

Kalahari Resorts & Convention Center
250 Kalahari Blvd, Pocono Manor, PA 18349
570-580-6000

Hotel: \$83 per night single/\$149 double
Be sure to block under Dirt & Gravel Roads Training ♣

Penn State Extension Manure Management Workshop for the Horse and Small Farm Owner



Got manure? Then you've got money. Many people look at livestock manure as a waste product and aren't really sure what to do with it. However, many sources agree that manure is the best fertilizer you can get... when used correctly. Applying manure to your crops can save you money by lowering the amount of fertilizers you need to purchase. And if you don't have crops, many farmers would be happy to collect it from you so they can apply it on their fields.

Having a manure management plan is a great way to figure out when, where, and how much manure to spread. Not only is the plan a handy tool to help you utilize all of the nutrients available in the manure, but it is actually required by the state of Pennsylvania that all farms with livestock, including horses, must have a written manure management plan. Even if you only have one animal, you are still required to have a plan.

Monroe County Conservation District is teaming up with the Penn State Cooperative Extension to provide a FREE manure management workshop on April 27, 2016 starting at 6pm. The first half of the workshop will be for anyone who produces manure but does not spread, and the second half will be for those who seek to spread manure. For more information and to register, call Matt Giambra at the MCCD office, 570-629-3060. ♣

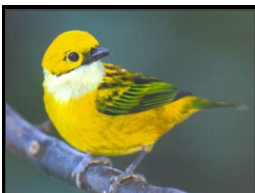
Dear Members and Friends,

As we put together this newsletter edition, the staff is tapping trees and preparing for the 39th Maple Sugaring Season in the Meesing sugarbush. The EE Center has a long history of programs since its beginnings in 1976. We continue to strive to provide quality EE programs for people of all ages, focusing on local resources and conservation issues.

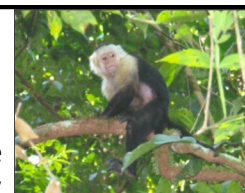
We have a number of exciting events planned for the coming months, including Monroe County Earth Day, a BioBlitz at the West End Regional Park, several new bus trips, and much more. We are also excited about the upcoming Members and Friends dinner on April 8th at Trout Lake. The new location will be a wonderful venue to celebrate the happenings at the EE Center this past year. If you did not receive an invitation, the evening's festivities are open to everyone—please call us and we will provide the information. One more thing we look forward to is the unveiling of our new website which will be much more user-friendly and contain more information about all our programs. Be on the lookout for the new and improved website in the next few months. ♣



Monroe County Conservation District Board Members and Staff



Announcing..... *Our next Costa Rica Birding Adventure!* February 3 – 14, 2017



Only the size of West Virginia, the Central American country of Costa Rica boasts an incredibly rich diversity of birds—over 800 species have been recorded there. Journey south with Brian Hardiman to enjoy spectacular birds such as the Resplendent Quetzal and Scarlet Macaw while soaking up the tropical warmth. Costa Rica is also home to a great variety of colorful tanagers, over 50 species of hummingbirds, and many other equally impressive birds. We are also likely to see howler and capuchin monkeys, sloths, coatimundis, and crocodiles. This will be Brian's 4th trip to Costa Rica and 14th overall to the American tropics. For details on this exciting birding and natural history adventure, contact Brian at 570-629-3061 or bhmccd@ptd.net.

Quiet Valley Interpretative Farm Walks

In cooperation with Quiet Valley Living Historical Farm, Kettle Creek Environmental Education Center is offering the public a chance to explore the farm and discuss the wildlife and habitats found on the property.



"Signs of Spring on the Farm" - April 2nd - Saturday

Join Kettle Creek Environmental Education staff from 2 - 4pm to discover and celebrate the early signs of spring in nature. We will explore several areas of the farm and look for early spring flowers, wildlife happenings, and more. This 2-hour program will be fun for the entire family.

"Breeding Birds at the Farm" - June 16th - Thursday

Join Kettle Creek Environmental Education staff from 7 - 9am in search of the numerous birds who nest at Quiet Valley. The varied habitat provides ideal nesting areas for a number of beautiful songbirds.

For all walks, please dress to be outside. All walks will begin in front of the Gift Shop at the Quiet Valley Farm. Cost: \$6/non-members, \$4/EE Center or Quiet Valley members. Children under 12 free. For more information or to pre-register, call the EE Center at 570-629-3061. As an added bonus, on the day of walks Quiet Valley is offering a reduced entrance fee to the farm for all walk participants. ♣

A Warm Welcome to our New Members!

Sobeida Ramos Family, Stroudsburg
Shellee Snyder Family, Bowmanstown
The Aversa Family, Bushkill
Debbie Davis, Pennsville, NJ
The Cooney Family, Stroudsburg
Bob Gubitosi, Stroudsburg

Denise Mulcahy, Newfoundland
Mary A. Frailey, Stroudsburg
Karin Hulme Family, Stroudsburg
Carol A. Akam, Mt. Bethel
David Mengle, Cresco

Kettle Creek Environmental Education Center

DATE _____

Make check payable to:

**Monroe County Conservation
District (MCCD)**

8050 Running Valley Road
Stroudsburg, PA 18360

<input type="checkbox"/> Student	\$ 10.00
<input type="checkbox"/> Individual	\$ 15.00
<input type="checkbox"/> Family	\$ 30.00
<input type="checkbox"/> Senior (65+)	\$ 10.00
<input type="checkbox"/> Organization	\$ 50.00
<input type="checkbox"/> Lifetime Individual	\$ 500.00
<input type="checkbox"/> Lifetime Family	\$ 750.00

NAME _____

ADDRESS _____

CITY _____

STATE _____ ZIP _____

PHONE # _____

**If you would like us to e-mail
your newsletter:**

E-MAIL _____

Please Share With A Friend

New **Renewal**



8050 RUNNING VALLEY ROAD
 STROUDSBURG, PA 18360
 TELEPHONE: 570-629-3060 FAX: 570-629-3063
 E-MAIL: monroecd@ptd.net
 WEBSITE: mcconservation.org

NON-PROFIT ORGANIZATION
 U.S. POSTAGE PAID
 STROUDSBURG, PA 18360
 PERMIT NO. 502

Conserving Natural Resources for Our Future

2016 Home School Programs

We are continuing to offer hands-on environmental education experiences for any interested home school students. Activities include classroom instruction and outdoor learning opportunities for all ages with students divided into three age groups: K - 2nd grade (parent accompaniment required), 3rd - 6th grade, and 7th - 12th grade. Each month a different topic will be addressed and all classes will be led by an Environmental Educator from 2 - 4pm. Cost: \$6/non-members, \$3/EE Center members for most programs. **Pre-registration is required and limited by the Monday preceding the program date.**

April 7 – The Three R’s – We should all be practicing The Three R’s... “R” you? Reducing, Reusing, and Recycling are important conservation practices and benefit both the environment and our communities.

May 5 – Wild about Wildflowers – Wildflowers add color and beauty to the springtime landscape and are an important part of the Kettle Creek community.

June – Astronomy (*note special cost, date, & time for 3rd - 12th grade)

June 2 – Grades K - 2 – Students will learn about stars, planets, and constellations during this program from 2 - 3:30pm at Kettle Creek.

June 23 – Grades 3 - 12 – Guest speaker Rich Grebb will introduce students to the night sky and the stars, planets, and constellations that fill it during this program held at Big Pocono State Park. Cost \$8/EE Center member, \$10/non-member. We will meet at 8:30pm at the parking lot at the top of Big Pocono State Park. ♣

2016 Kettle Creek Art Gallery Schedule

March 1 - 31: Will Daskal - “Woods and Waters” - An artistic tribute to the bucolic splendor of the Pocono Mountains. Will’s paintings are rooted in bits of reality, as well as his own personal existence, forming a springboard for situations he might observe or imagine. *Opening Reception: Saturday, March 5, 11am - 1pm.*

April 1 - 30: Linda Stockman - “Wildlife Art” - Linda concentrates mostly on wildlife art and occasionally portraiture and animation, using oil and

acrylic paints as her mediums of choice. *Opening Reception: Saturday, April 2, 11am - 1pm.*

May 1 - 31: Nancy Hopping - “Living with Wildlife” - Award-winning wildlife photography. Nancy captures the beauty of Pocono wildlife and captures what she sees and feels in her photography. *Opening Reception: Saturday, May 21, 11am - 1pm.*

June 1 - 30: Pocono Photo Club - “Natural Monroe” - Our photos reflect the natural beauty of Monroe County as seen by our diverse group of photographers. Additional images can be viewed on our Facebook page where all are invited to join us in sharing images from the world around us. *Opening Reception: Saturday, June 4, 11am - 1pm.* ♣



Stay tuned while our website is being updated with great new features!



Like us on Facebook



Please check our website for updates about the Rimrock detour.